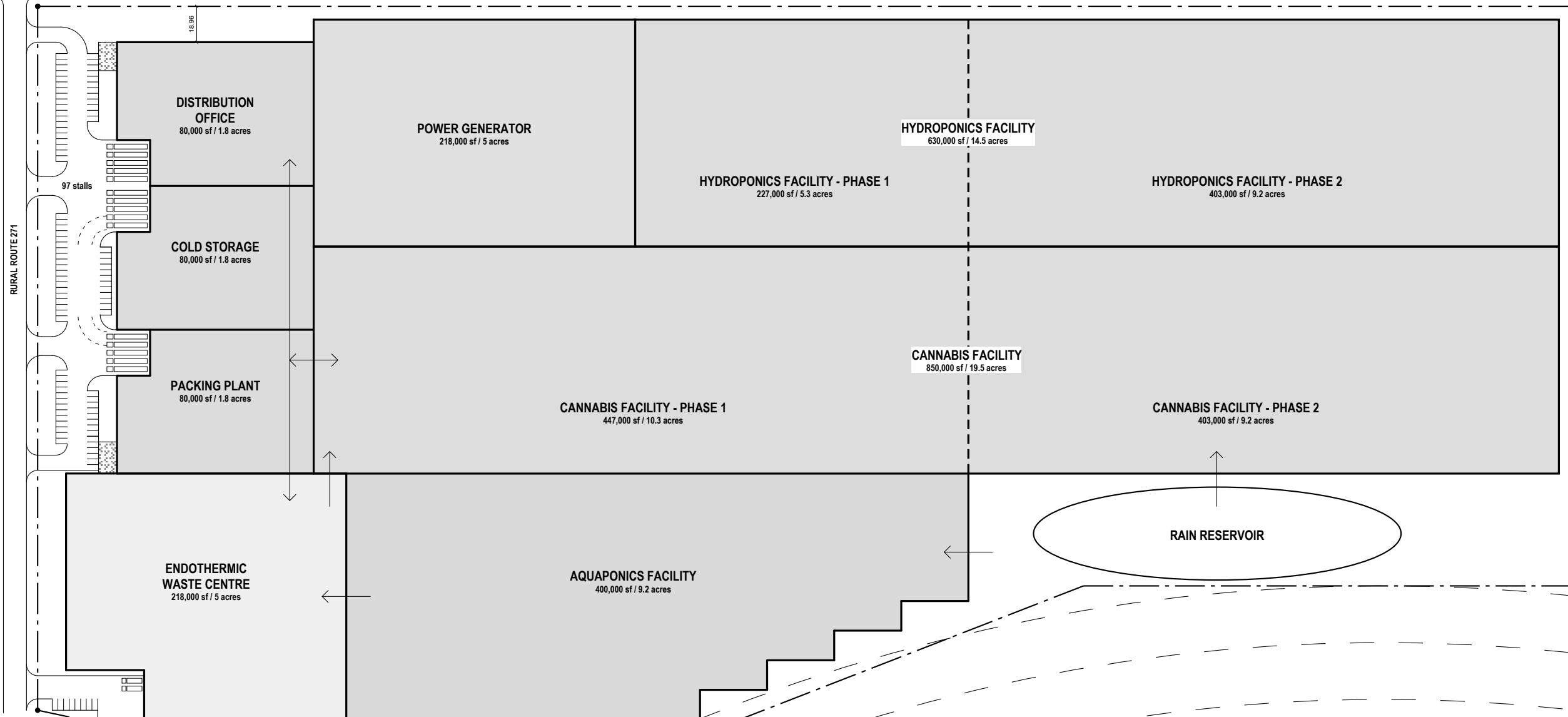


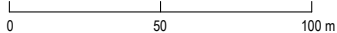
BLINDMAN DRIVE / RURAL ROUTE 392



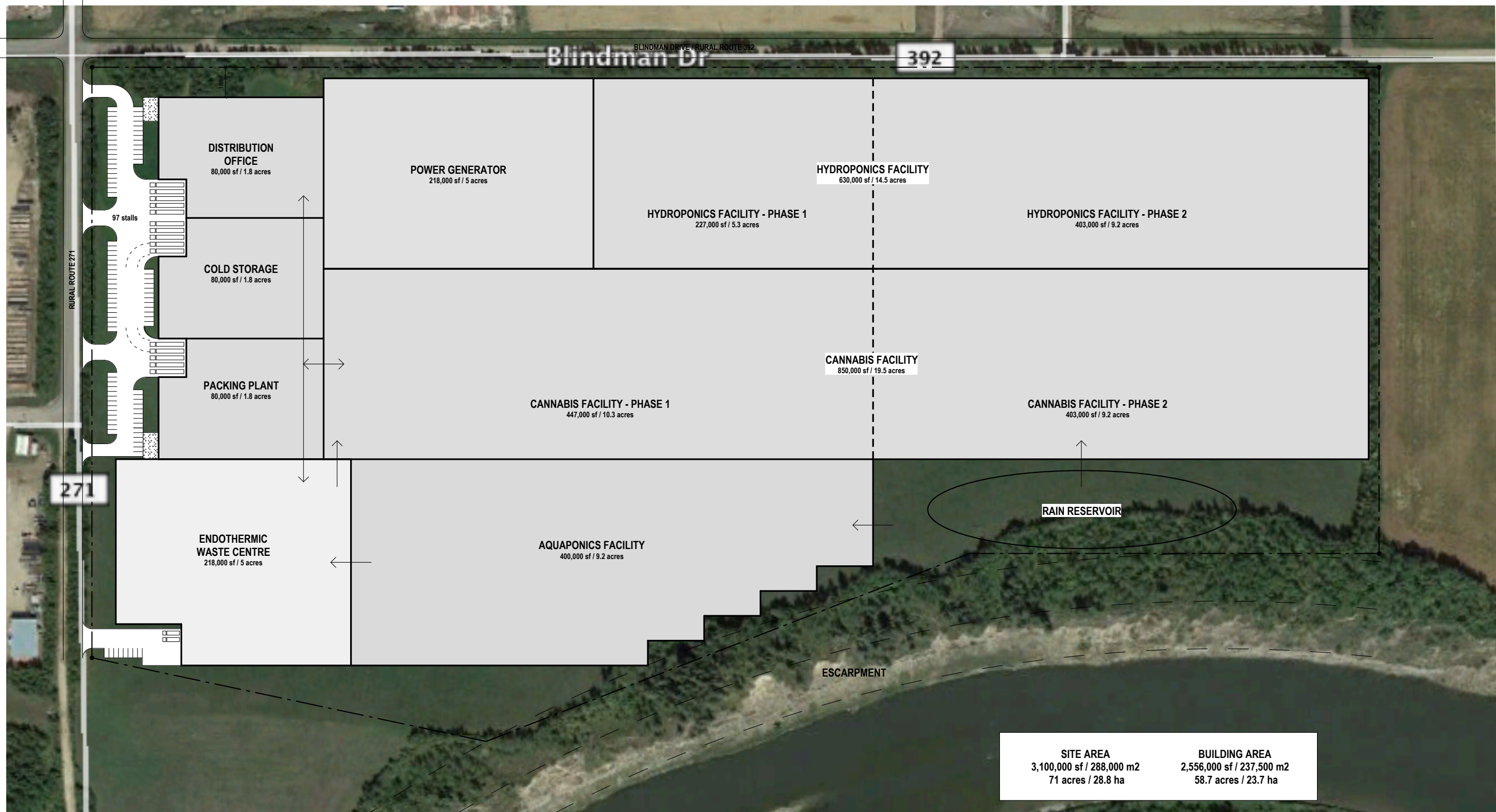
SITE AREA	BUILDING AREA
3,100,000 sf / 288,000 m ²	2,556,000 sf / 237,500 m ²
71 acres / 28.8 ha	58.7 acres / 23.7 ha

SITE PLAN

1:1000

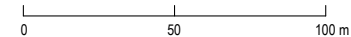


THIS IS A COPYRIGHT DRAWING & DESIGN. THE OWNER OR USER OF THIS DRAWING OR INFORMATION IN ANY FORM IS PROHIBITED FROM REPRODUCING OR TRANSMITTING IN ANY MANNER WITHOUT THE WRITTEN PERMISSION OF SARPAL GROUP PROJECTS INC. THIS DRAWING IS INTENDED FOR USE BY CLIENTS ONLY. SARPAL GROUP PROJECTS INC. ASSUMES NO RESPONSIBILITY IN INSTANCES OF THIRD PARTY USE OF THIS DRAWING.

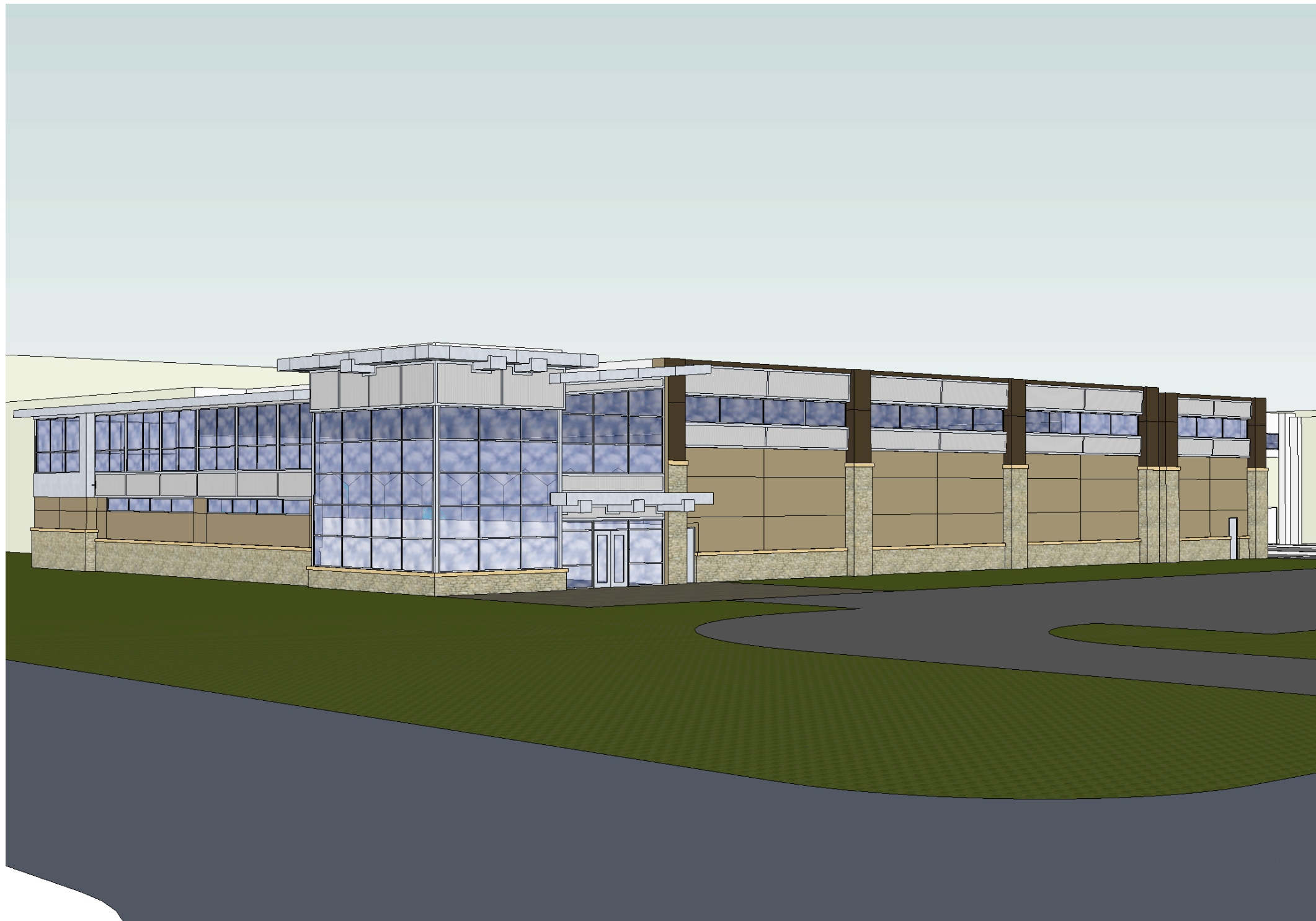


SITE PLAN 

1:1000



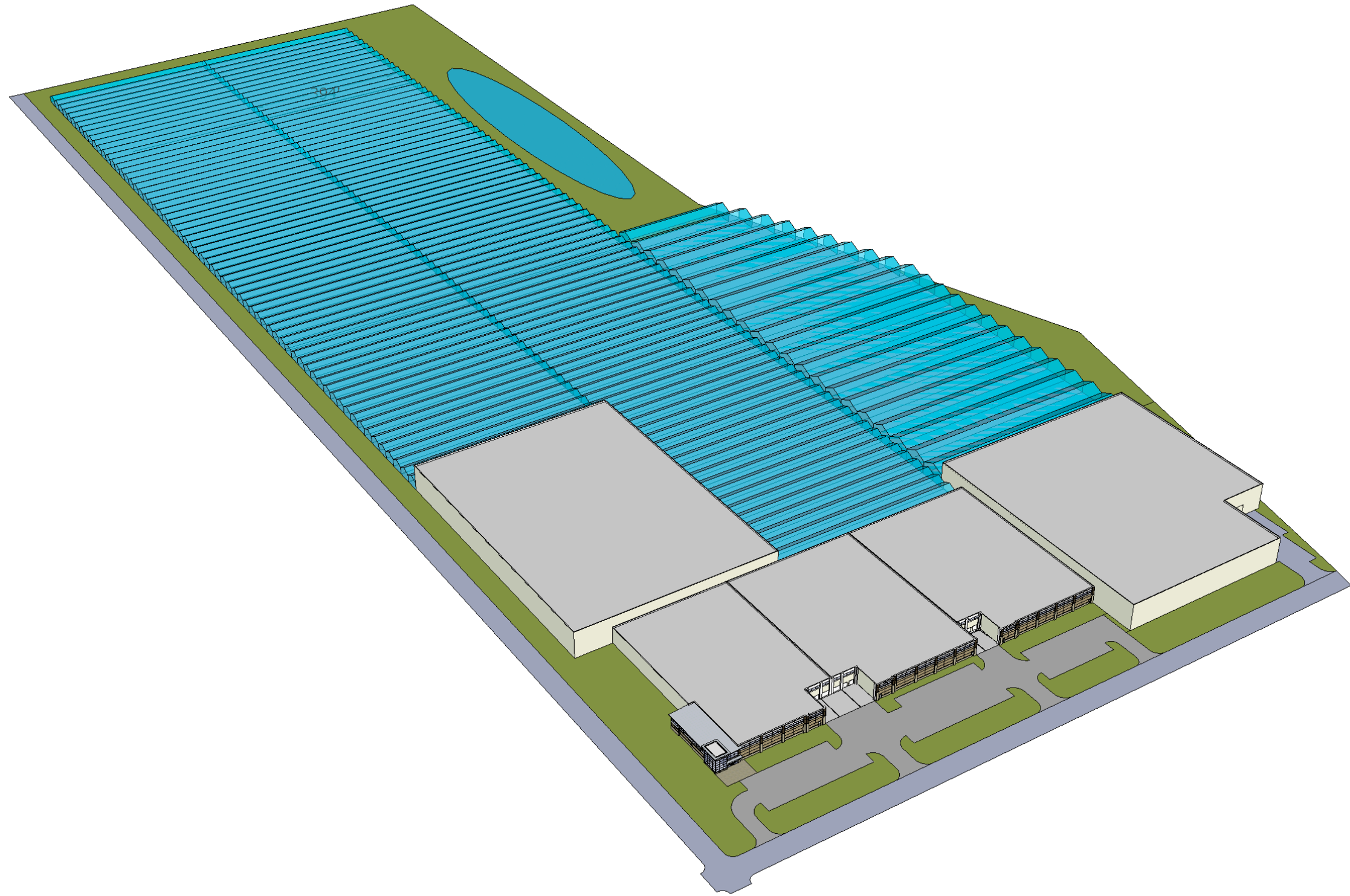
THIS IS A COPYRIGHT DRAWING & DESIGN. THE CONTENT BEING SHOWN CONSTITUTES PROPRIETARY INFORMATION AND IS NOT TO BE REPRODUCED OR TRANSMITTED IN ANY FORM OR BY ANY MEANS, ELECTRONIC OR MECHANICAL, INCLUDING PHOTOCOPYING, RECORDING, OR BY ANY INFORMATION STORAGE AND RETRIEVAL SYSTEM, WITHOUT THE WRITTEN PERMISSION OF SARPAL GROUP PROJECTS INC. THIS DRAWING IS INTENDED FOR USE BY CLIENTS ONLY. SARPAL GROUP PROJECTS INC. ASSUMES NO LIABILITY IN INSTANCES OF THIRD PARTY USE OF THIS DRAWING.



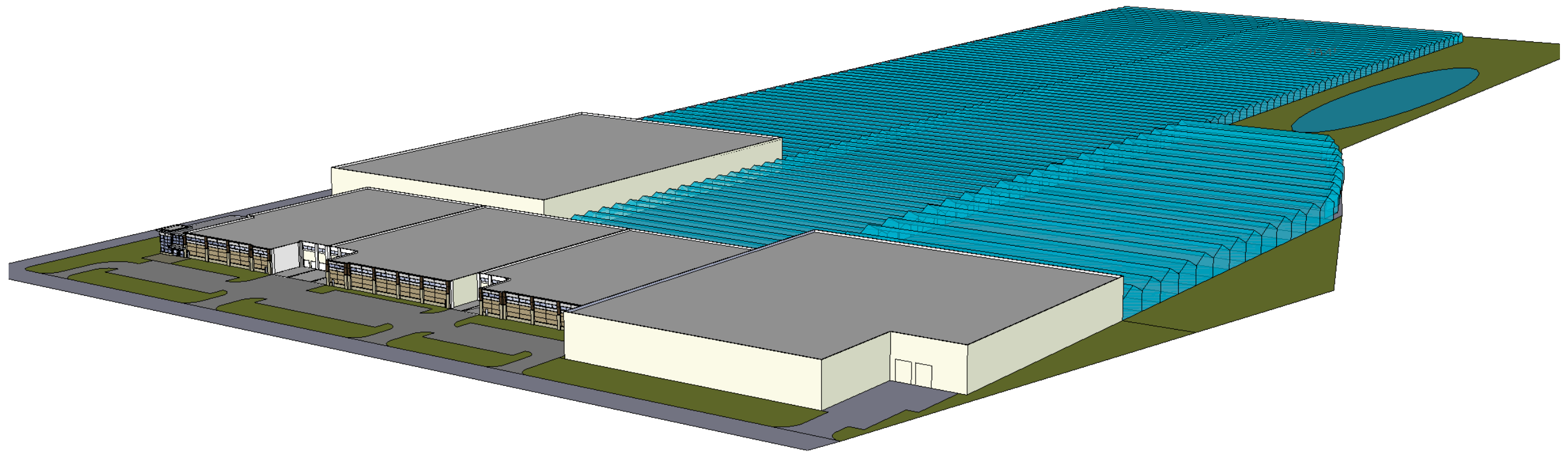
THIS IS A COPYRIGHT DRAWING & DESIGN
AND SHALL BE KEPT CONFIDENTIAL AND NOT REPRODUCED IN ANY FORM
WITHOUT THE WRITTEN PERMISSION OF SARPAL GROUP PROJECTS INC.
THIS DRAWING IS INTENDED FOR USE BY CLIENTS ONLY.
MUELLER WARDEN PROJECTS INC. ASSUMES NO RESPONSIBILITY
IN INSTANCES OF THIRD PARTY USE OF THIS DRAWING.



THIS IS A COPYRIGHT DRAWING & DESIGN
AND SHALL BE KEPT UNDER CONTROL AND NOT REPRODUCED IN ANY FORM
WITHOUT THE WRITTEN PERMISSION OF SARPAL GROUP PROJECTS INC.
THIS DRAWING IS INTENDED FOR USE BY CLIENTS ONLY
MUELLER WARDEN PROJECTS INC. ASSUMES NO RESPONSIBILITY
IN INSTANCES OF THIRD PARTY USE OF THIS DRAWING.



THIS IS A COPYRIGHT DRAWING & DESIGN. NO PART OF THIS DRAWING OR INFORMATION CONTAINED HEREIN IS TO BE REPRODUCED OR TRANSMITTED IN ANY FORM OR BY ANY MEANS, ELECTRONIC OR MECHANICAL, INCLUDING PHOTOCOPYING, RECORDING, OR BY ANY INFORMATION STORAGE AND RETRIEVAL SYSTEM, WITHOUT THE WRITTEN PERMISSION OF SARPAL GROUP PROJECTS INC. THIS DRAWING IS INTENDED FOR USE BY CLIENTS ONLY. SARPAL GROUP PROJECTS INC. ASSUMES NO RESPONSIBILITY IN INSTANCES OF THIRD PARTY USE OF THIS DRAWING.



THIS IS A COPYRIGHT DRAWING & DESIGN. NO PART OF THIS DRAWING OR DESIGN IS TO BE REPRODUCED OR TRANSMITTED IN ANY FORM OR BY ANY MEANS, ELECTRONIC OR MECHANICAL, INCLUDING PHOTOCOPYING, RECORDING, OR BY ANY INFORMATION STORAGE AND RETRIEVAL SYSTEM, WITHOUT THE WRITTEN PERMISSION OF SARPAL GROUP PROJECTS INC. THIS DRAWING IS INTENDED FOR USE BY CLIENTS ONLY. SARPAL GROUP PROJECTS INC. ASSUMES NO LIABILITY IN INSTANCES OF THIRD PARTY USE OF THIS DRAWING.